

TECHNICAL DATA



M - 6x 100w LED

KEYPOINTS

- All-in-one product (integrated ballasts)
- Easy to carry and fast setup
- High-quality light and instant illumination
- Up to 50 000 lumen

MEASUREMENTS

Lamps	6x 100w LED
Average lamps life <i>under normal conditions of use</i>	50,000 hours
Efficiency	78 lm/W
Type of lamp socket	Airstar LED engine
Maximum power	640 w
Available voltages	100v to 240v
Restrike time	instant
Required generator	1 Kva

LIGHTING DATA

Maximum Lighted Area (EN1838 norm)	17,000 sq ft
Lighted Area with Minimum 5 foot candle	6,500 ft
Maximum lumen	50 000 lm
Color temperature	Daylight

ENVELOPE

Diameter	3 ft
Height	2 ft
Flame-retardant fabric	
Rain and dust proof material	IP54
Maximum ambient temperature	45°C
Protection system by fuse + breaker	

RECOMMENDED ACCESSORIES

5m 3-section telescopic stand	P500TA
5m telescopic column + heavy tripod	P500AH
Tilting ball joint	
Sand bag	35 lbs.

CUSTOMER SUPPORT

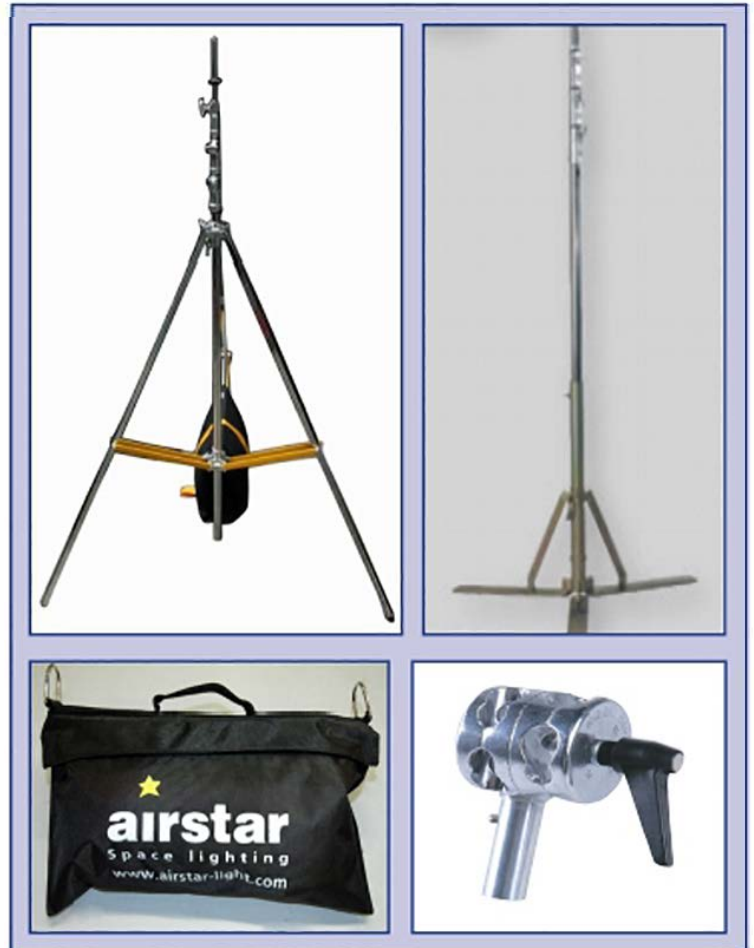
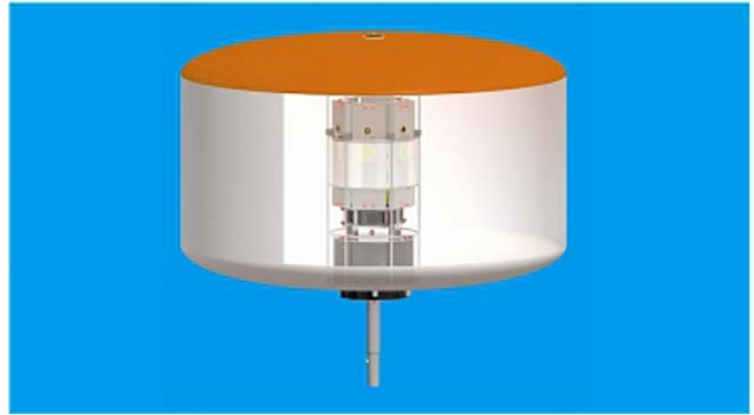
Basic repair kits are provided with the product. Customer service is available through Airstar's local dealers.



TRAFFIC CONTROL SOLUTIONS

PACKAGING

Black PVC cylinder with integrated handle	
Dimensions	40 in x 12 in x 12 in
Weight	24 lbs.



ECO-FRIENDLY
Better light. Better diffusion. More efficiency.
This Airstar product helps you reducing carbon footprints of your worksites. Feel free to ask us why!