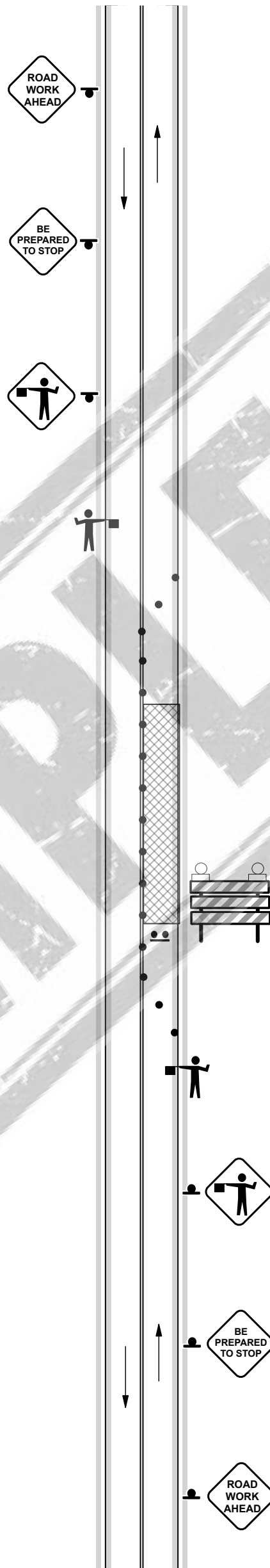
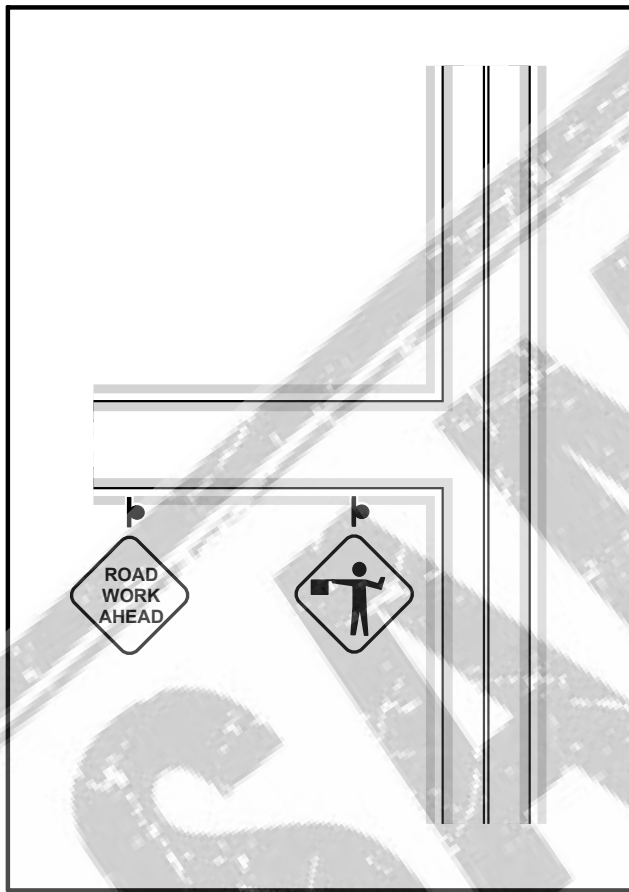
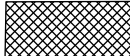


Typical Side Street Signage



**Author:** \_\_\_\_\_ **Date:** \_\_\_\_\_ **Sheet:** 1/1

**Notes/Comments:**

 = WORK ZONE

- Flaggers shall not hold traffic more than 3-5 minutes
- Flagger stations shall not be set in vertical or horizontal curves
- Adjustments to sign spacing & channelization devices, for vertical and horizontal curves, side roads and driveways shall be made in field.
- All advanced warning signs should be double indicated when feasible.
- NOT TO SCALE

**TAPER LENGTH, NUMBER OF DEVICES, AND DEVICE SPACING TABLE**

POSTED SPEED	TAPER LENGTH "L"			MIN DEVICES NEEDED	MAX DEVICE SPACING		BUFFER ZONE LENGTH
	10' LANE	11' LANE	12' LANE		TAPER	TANGENT	
25	105'	115'	125'	6	25'	50'	155'
30	150'	165'	180'	7	30'	60'	200'
35	205'	225'	245'	8	35'	70'	250'
40	270'	295'	320'	9	40'	80'	305'
45	450'	495'	540'	13	45'	90'	360'
50	500'	550'	600'	13	50'	100'	425'
55	550'	605'	660'	13	55'	110'	495'
60	600'	660'	720'	13	60'	120'	570'
65	650'	715'	780'	13	65'	130'	645'
70	700'	770'	840'	13	70'	140'	730'
75	750'	825'	900'	13	75'	150'	820'

Merging Tapers = "L", Shifting Tapers = "L/2" & Shoulder Tapers = "L/3"  
 See tables 6C-1 through 6C-4 from MUTCD for more information  
 Min Sign Spacing = 10X Posted Speed Limit